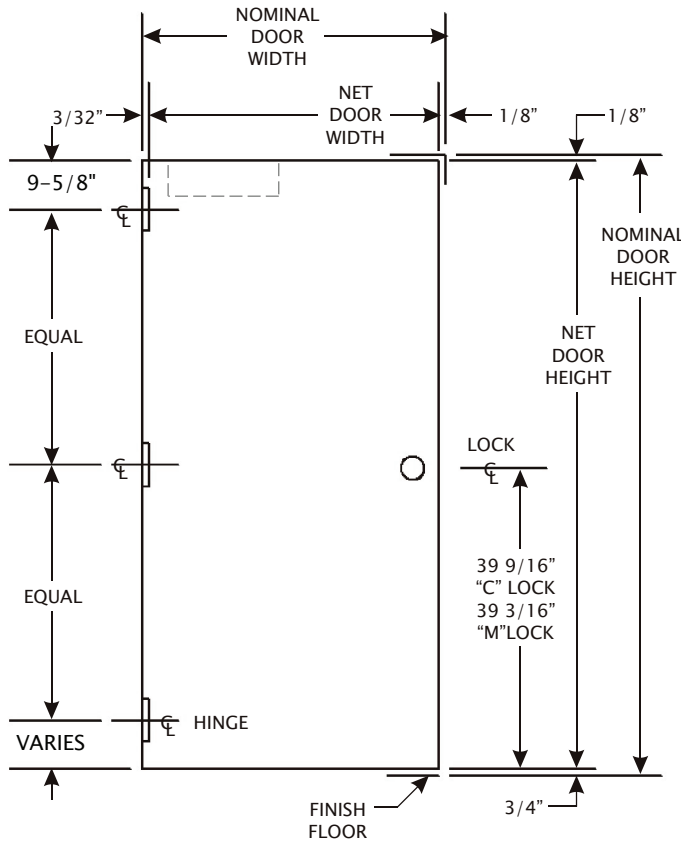


TECHNICAL DATA SHEET

D - 100 - 03 HINGE & STRIKE LOCATIONS ON DOORS

16,18,20 GAUGE DOORS

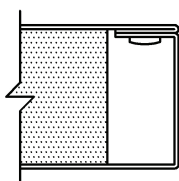
MMI 4-1/2" HINGE & LOCK LOCATIONS



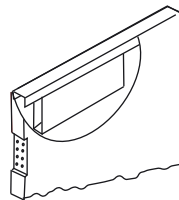
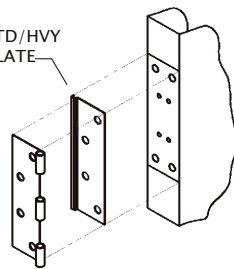
STANDARD DOOR WIDTHS	
NOMINAL DOOR WIDTHS	NET DOOR WIDTHS
2'-0"	23 3/4"
2'-4"	27 3/4"
2'-6"	29 3/4"
2'-8"	31 3/4"
3'-0"	35 3/4"
3'-4"	39 3/4"
3'-6"	41 3/4"
3'-8"	43 3/4"
3'-10"	45 3/4"
4'-0"	47 3/4"

STANDARD DOOR HEIGHTS	
NOMINAL DOOR HEIGHTS	NET DOOR HEIGHTS
6-8"	79 1/8"
7'-0"	83 1/8"
7'-2"	85 1/8"
7'-10"	93 1/8"
8'-0"	95 1/8"

ANSI® A250.8-1998 COMPLIANCE	
LEVEL 3	EXTRA HEAVY DUTY
MODEL 1	FULL FLUSH
EDGES	SQUARE EDGE
CORE	POLYSTYRENE / HONEYCOMB
FACES	ASTM A366 or A620



MECHANICALLY INTERLOCKED SQUARE EDGE
HINGE STD./HVY FILLER PLATE

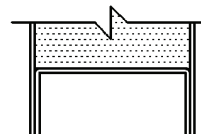


CLOSER REINFORCEMENT



16 GAUGE TOP CHANNEL

"UNIVERSAL HANDING"



16 GAUGE BOTTOM CHANNEL

TECHNICAL DATA SHEET

D - 100 - 03
HINGE & STRIKE
LOCATIONS ON DOORS

4 1/2" HINGE & STRIKE COMPARISON 1 3/4"

MANUF.	A	B	C	D	E	F	G	H	J
MMI	6'8" 6'10" 7'0" 7'2" 7'4" 7'6" 7'8" 7'10" 8'0"	C4 = 39 9/16", MB = 39 3/16"	9 5/8" 7 5/8" 9 5/8" 11 5/8" 9 5/8" 11 5/8" 9 11/16" 7 9/16" 9 9/16"	2 @ 29 15/16" 2 @ 31 15/16" 2 @ 31 15/16" 2 @ 31 15/16" 2 @ 33 15/16" 2 @ 33 15/16" 3 @ 23 5/16" 3 @ 25 5/16" 3 @ 25 5/16"	9 5/8" (7 3/8")	5/16"	3/16"	1/16"	1/8"
BENCHMARK	6'8" 6'10" 7'0" 7'2" 7'4" 7'6" 7'8" 7'10" 8'0"	C4 = 39 9/16", MB = 39 3/16"	11 1/2" 13 1/2" 11 1/2" 13 1/2" 11 1/2" 13 1/2" 7 1/2" 9 1/2" 11 1/2"	2 @ 30 1/4" 2 @ 30 1/4" 2 @ 32 1/4" 2 @ 32 1/4" 2 @ 34 1/4" 2 @ 34 1/4" 3 @ 25 1/2" 3 @ 25 1/2" 3 @ 25 1/2"	7 1/8" (4 7/8")	11/32"	1/4"	1/8"	3/32"
CECO	6'8" 6'10" 7'0" 7'2" 7'4" 7'6" 7'8" 7'10" 8'0"	C4 = 41 1/16", MB = 40 11/16"	8 1/4"	2 @ 31" 2 @ 32" 2 @ 33" 2 @ 34" 2 @ 35" 2 @ 36" 3 @ 24 21/32" 3 @ 25 21/64" 3 @ 26"	8 7/8" (6 5/8")	5/16"	1/4"	1/8"	1/16"
CURRIES	6'8" 6'10" 7'0" 7'2" 7'4" 7'6" 7'8" 7'10" 8'0"	C4 = 39 1/4", MB = 38 7/8"	11 1/2"	2 @ 30 1/4" 2 @ 31 1/4" 2 @ 32 1/4" 2 @ 33 1/4" 2 @ 34 1/4" 2 @ 35 1/4" 3 @ 24 1/8" 3 @ 24 7/8" 3 @ 25 1/2"	7 1/8" (4 7/8")	5/16"	1/4"	1/8"	1/16"
DEANSTEEL	6'8" 6'10" 7'0" 7'2" 7'4" 7'6" 7'8" 7'10" 8'0"	C4 = 39 9/16", MB = 39 3/16"	11 1/2"	2 @ 30 1/4" 2 @ 31 1/4" 2 @ 32 1/4" 2 @ 33 1/4" 2 @ 34 1/4" 2 @ 35 1/4" 24 1/8", 24 1/4", 24 1/8" 24 7/8", 24 3/4", 24 7/8" 3 @ 25 1/2"	7 1/8" (4 7/8")	5/16"	1/4"	1/8"	1/16"
KEWANEE	6'8" 6'10" 7'0" 7'2" 7'4" 7'6" 7'8" 7'10" 8'0"	C4 = 39 9/16", MB = 39 3/16"	9 1/2"	2 @ 30 1/16" 2 @ 31 1/16" 2 @ 32 1/16" 2 @ 33 1/16" 2 @ 34 1/16" 2 @ 35 1/16" 24 1/16", 24", 24 1/16" 24 11/16", 24 3/4", 24 11/16" 3 @ 25 3/8"	9 1/2" (7 1/4")	3/8"	1/4"	1/16"	1/8"
MESKER	6'8" 6'10" 7'0" 7'2" 7'4" 7'6" 7'8" 7'10" 8'0"	C4 = 39 9/16", MB = 39 3/16"	11 1/2" 11 1/2" 11 1/2" 11 1/2" 11 1/2" 11 1/2" 10 1/2" 9 1/2" 11 1/2"	2 @ 30 1/4" 2 @ 31 1/4" 2 @ 32 1/4" 2 @ 33 1/4" 3 @ 34 1/4" 3 @ 35 1/4" 3 @ 24 1/2" 3 @ 25 1/2" 3 @ 25 1/2"	7 1/8" (4 7/8")	5/16"	1/4"	1/8"	1/16"

TECHNICAL DATA SHEET

D - 100 - 03
HINGE & STRIKE
LOCATIONS ON DOORS

4 1/2" HINGE & STRIKE COMPARISON 1 3/4"

MANUF.	A	B	C	D	E	F	G	H	J
PIONEER	6'8" 6'10" 7'0" 7'2" 7'4" 7'6" 7'8" 7'10" 8'0"	C4 = 37 1/4", MB = 36 7/8"	11 1/2" 11 1/2" 11 1/2" 11 1/2" 11 1/2" 11 1/2" 11 7/16" 11 9/16" 11 1/2"	2 @ 30 1/4" 2 @ 31 1/4" 2 @ 32 1/4" 2 @ 33 1/4" 2 @ 34 1/4" 3 @ 23 1/2" 3 @ 24 3/16" 3 @ 24 13/16" 3 @ 25 1/2"	7 1/8" (4 7/8")	5/16"	7/32"	3/32"	3/32"
REPUBLIC	6'8" 6'10" 7'0" 7'2" 7'4" 7'6" 7'8" 7'10" 8'0"	C4 = 39 9/16", MB = 39 3/16"	9 5/8" 11 1/2" 11 5/8" 11 5/8" 11 1/2" 11 1/2" 11 5/8" 11 3/8" 11 1/2"	2 @ 29 15/16" (7 3/8") 2 @ 31 1/4" (4 7/8") 2 @ 29 15/16" (9 3/8") 2 @ 30 15/16" (9 3/8") 3 @ 34 1/4" (4 7/8") 3 @ 35 1/4" (4 7/8") 3 @ 24 1/8" (4 7/8") 3 @ 24 7/8" (4 7/8") 3 @ 25 1/2" (4 7/8")	9 5/8" 7 1/8" 11 5/8" 11 5/8" 7 1/8" 7 1/8" 7 1/8" 7 1/8" 7 1/8"	5/16"	1/4"	1/8"	1/16"
STEELCRAFT	6'8" 6'10" 7'0" 7'2" 7'4" 7'6" 7'8" 7'10" 8'0"	C4 = 39 9/16", MB = 39 3/16"	9 5/8"	2 @ 29 15/16" 2 @ 30 15/16" 2 @ 31 15/16" 2 @ 32 15/16" 2 @ 33 15/16" 2 @ 34 15/16" 3 @ 23 61/64" 3 @ 24 5/8" 3 @ 25 19/64"	9 5/8" (7 3/8")	5/16"	1/4"	1/8"	1/16"

